

The background features a dark, textured surface covered in numerous water droplets of varying sizes. Two large, semi-transparent red shapes, resembling triangles or wedges, are positioned on the left side of the image, one pointing upwards and one pointing downwards, creating a sense of depth and contrast.

HOT WATER SYSTEMS

THERMANNTM



HOT WATER YOU CAN DEPEND ON

Precision engineered for efficiency and long life. Thermann is setting new standards for hot water systems in New Zealand. Packed with innovative features and proven technology, Thermann delivers the ultimate hot water experience everyday. What's more, Thermann is committed to total customer care, so you'll enjoy market-leading warranties and full after sales support for many years to come.

CONTENTS

<u>ELECTRIC SMALL</u>	<u>5</u>
<u>ELECTRIC LARGE</u>	<u>6</u>
<u>CONTINUOUS FLOW 6 STAR</u>	<u>8</u>
<u>CONTINUOUS FLOW ACCESSORIES</u>	<u>9</u>



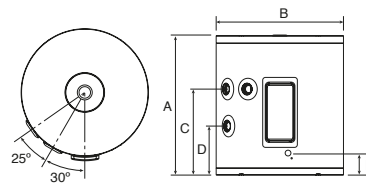
ELECTRIC SMALL HOT WATER SYSTEM



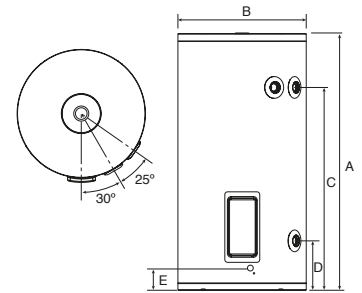
Thermann small Electric Storage hot water units allow you to install hot water where space and access is restrictive.

Designed with compact dimensions, it easily fits under benches and inside cupboards without compromising hot water delivery. Also available in appliance white for a more aesthetically pleasing finish, with a plug in option for flexibility.

25L SPECIFICATIONS



50L SPECIFICATIONS



SPECIFICATIONS

Electric Tank

Measurements	25L	50L
Total Height (A)	455	675
Total Width (B)	405	405
Outlet Height (C)	275	490
Inlet Height (D)	145	155
Electrical Entry (E)	70	75
Storage Capacity (litres)	30.5	48
Hot Water Delivery (litres)	25	50
Net Weight Empty (kg)	17	23
Element Size (kW)	2.4, 3.6	2.4, 3.6
Relief Valve		
Pressure (kPa)	1000	1000
Temperature (°C)	99	99
Power Rate (kW)	10	10

Selecting the right unit for you

	25L	50L
Inlet/Outlet	Single Handed (LHS connections)	Single Handed (RHS connections)
No. People (continuous)	1	1-2



Cylinder



Parts and labour

2.4kW models come with a plug and lead only.

ELECTRIC LARGE HOT WATER CYLINDERS

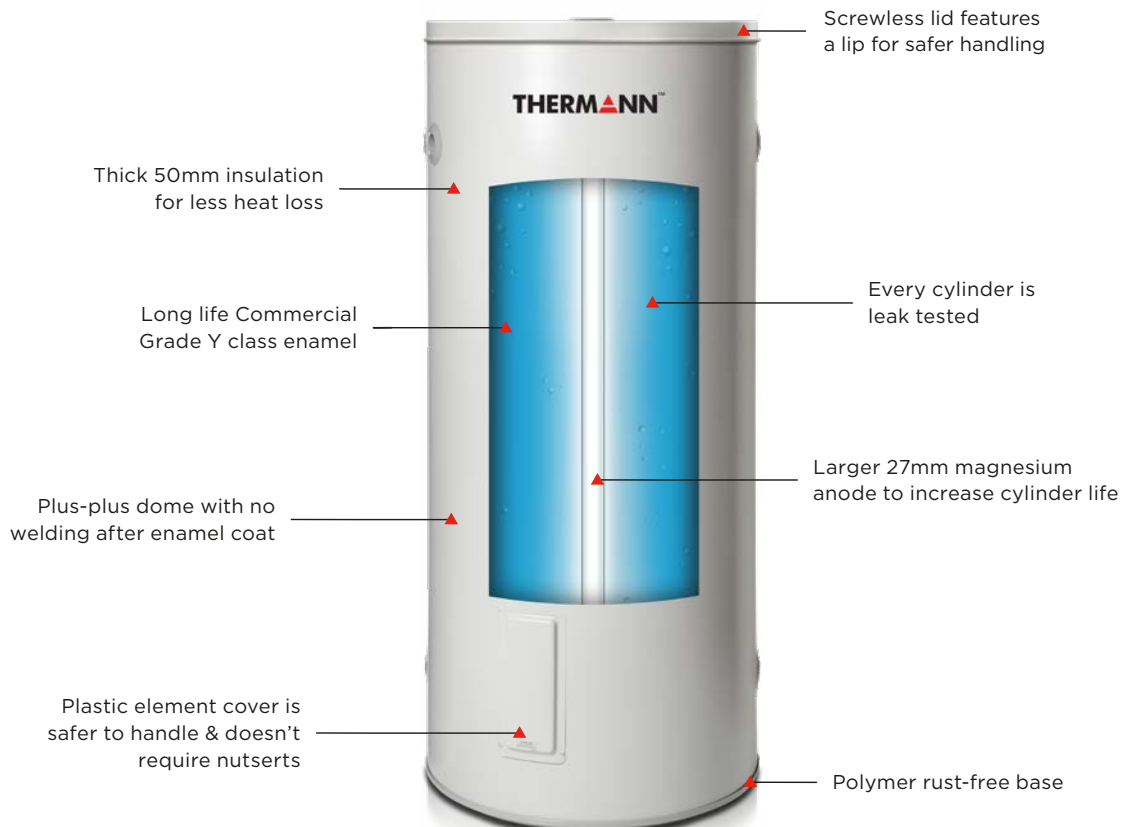


Thermann electric hot water cylinders are an insulated storage vessel efficiently storing hot water, ready for use, when you need it. The Thermann range of electric cylinders offer solutions in a variety of different sizes to suit your needs.

FEATURES

- Commercial grade enamel and a thicker anode
- Suitable for both low and mains pressure applications
- Coated steel finish
- Internal heat trap
- Side plumbing connections
- Low maintenance and long service life
- Can be installed indoors or out
- 10-year tank warranty, including 1-year full parts and labour*

RANGE FEATURES



SPECIFICATIONS

Electric Cylinder

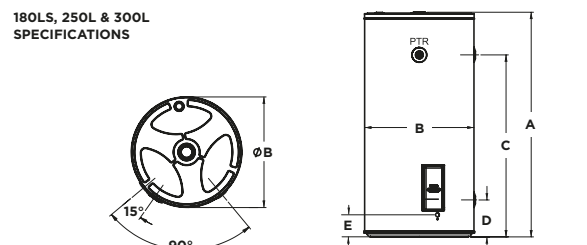
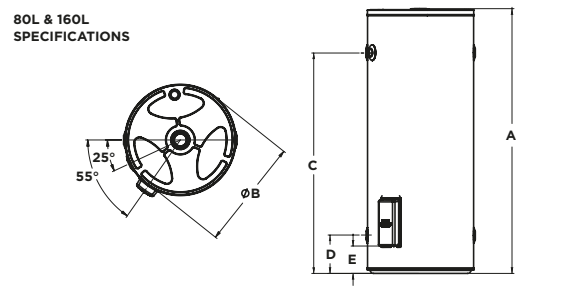
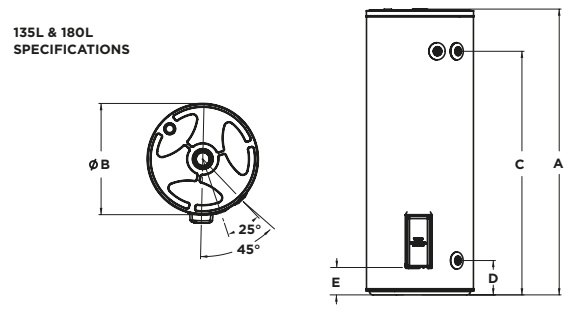
Measurements	80L	135	160L	180L	180L S	250L	300L
Total Height (A)	925	1298	1315	1775	1190	1566	1804
Diameter (B)	490	490	530	490	580	580	580
Outlet Height (C)	735	1106	1095	1574	964	1342	1580
Inlet Height (D)	160	145	190	155	196	196	196
Electrical Entry (E)	85	125	125	75	105	105	120
Storage Capacity (L)	88	132	163	183.5	183.5	250	291
Net Weight Empty (kg)	41	50	59	65	60	77	94
Element Sizes (kW)	3.6	1.8, 3.0	3.6	2.4, 3.0	3.0	3.0	3.0
Relief Valve							
Pressure (kPa)	1000	1000	1000	1000	1000	1000	1000
Power Rating (kW)	10	10	10	10	10	10	10
Temperature (°)	99	99	99	99	99	99	99
Max Inlet Pressure							
Without an ECV (kPa)	800	800	800	800	800	800	800
With an ECV (kPa)	650	650	650	650	650	650	650

Selecting the right unit for you

Model	80L	135	160L	180L	250L	300L
No. People	2-3	2-4	3-5	4-5	4-6	5-7

Person can represent dishwasher or washing machine.

REECE MODEL	DESCRIPTION
9507804	Thermann Electric HWU SE 80L 3.6kW
9507963	Thermann Electric HWU SE 135L 1.8kW
9507964	Thermann Electric HWU SE 135L 3.0kW
9507808	Thermann Electric HWU SE 160L 3.6kW
1360885	Thermann Electric HWU SE 180L 2.4kW
1360884	Thermann Electric HWU SE 180L 3.0kW
1360875	Thermann Electric HWU SE 180L Squat 3kW
1360876	Thermann Electric HWU SE 250L 3.0kW
1360877	Thermann Electric HWU SE 300L 3.0kW



Cylinder



Parts and Labour

CONTINUOUS FLOW 6 STAR

HOT WATER SYSTEMS



Thermann's latest range of Continuous Flow units are an excellent option for New Zealand homes. Thermann gas continuous flow water heaters heat the water only as needed, not wasting energy by keeping water in a tank hot, earning it a 6 star energy rating.


FEATURES

- 6 star energy rating
- Providing New Zealand homes with superior technology straight from Noritz, a leading Japanese manufacturer of household water heaters
- Never runs out of hot water
- Made in Japan
- Electronic ignition means no standby pilot light
- 12-year warranty on heat exchanger, including 3-year full parts and labour*

SPECIFICATIONS

Model - preset 55°C	26L NG / LPG
Flow Rate (l/min @ 25° rise)	26
Max Set Temperature °C	75
Min Operating Flow Rate (l/min)	2.4
Gas Consumption MJ/h - NG	200
Gas Consumption MJ/h - LPG	200
Star Rating	6.0
Gas Type	NG or ULPG
Weight (kg)	22
Max water supply pressure (kPa)	1000
Min water supply pressure (kPa)	200
Cold Water Connection	20mm ¾"
Hot Water Connection (mm)	20mm ¾"
Gas Connection (mm)	20mm ¾"

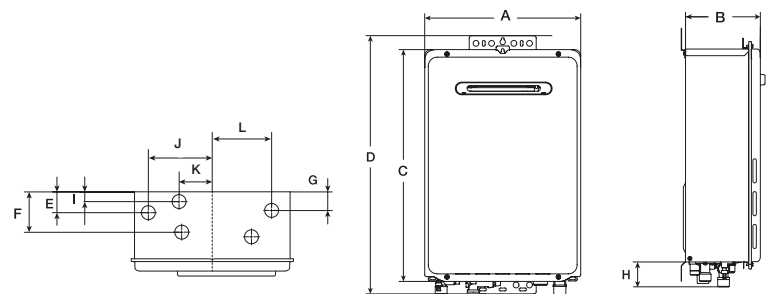
Reece Model	Description
9507956	Thermann 26L C/Flow N/G
9507957	Thermann 26L C/Flow LPG



CONTROLLERS

Separate controllers available that allow you to select the hot water temperature you prefer - a welcome safety feature for families.
9507958 - Main, 9507959 - Bathroom 1, 9507960 - Bathroom 2

Dimensions (MM)	26L NG / LPG
Width (A)	350
Depth (B)	170
Height - Unit (C)	600
Height - Including Brackets (D)	655
Hot Water Outlet (From Back) (E)	40
Cold Water Inlet (From Back) (F)	97
Gas Connection (From Back) (G)	40
Gas Connection Length (From Base)	49
Cold Connection Length (From Base) (H)	48
Hot Connection Length (From Base)	44
Hot Water Outlet (From Centre) (J)	131
Drain & Cold Water Outlet (From Centre) (K)	54
Gas Connection (From Centre) (L)	100



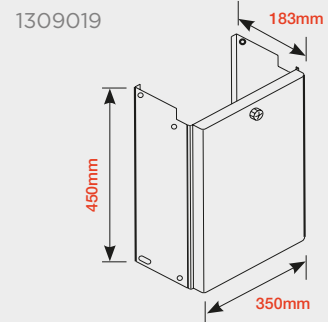
8 Heat Exchanger Parts and labour

CONTINUOUS FLOW ACCESSORIES

PIPE COVER



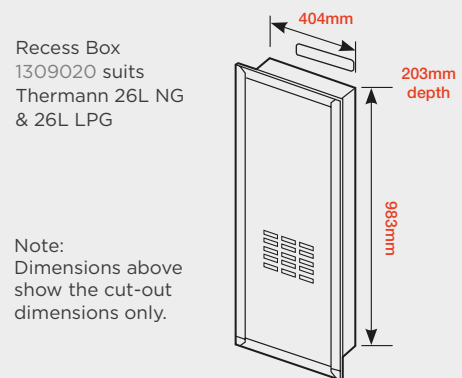
- Pipe covers conceal pipes and valves for a nice, tidy finish to the installation.
- Pipe covers are supplied in the same colour as the continuous flow water heater.



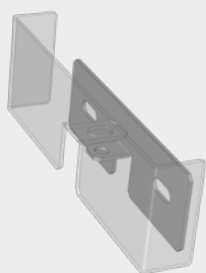
RECESS BOX



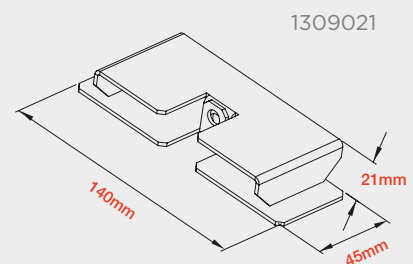
- Allows the water heater to be installed recessed into the wall, providing a flush finish when installed.



ANTI THEFT BRACKET



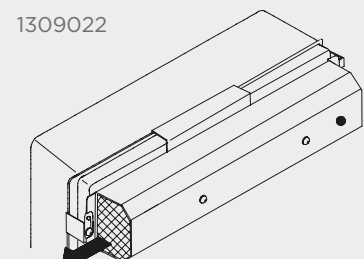
- Secures your continuous flow water heater from theft.
- A bracket fits over the water heater mounting bracket, preventing the unit from being removed from the wall without irreparable damage.



FLUE DIVERTER



- Manufactured from durable stainless steel.
- Designed to divert exhaust in a sideways direction away from windows, doors, fences, trees or other structures.
- Allows the water heater to operate efficiently ensuring the exhaust is not being obstructed.



www.reece.co.nz/plumbing/brands/thermann

Reece. Works for you.™

Visit www.reece.co.nz for your nearest Reece store.

Due to limitations in the printing process the colours in this brochure are a guide only.

The manufacturer/distributor reserves the right to vary specifications or delete models from their range without prior notification. The manufacturer/distributor takes no responsibility for printing errors.

All products enjoy a product replacement warranty. *For full warranty details visit www.reece.co.nz/warranties

V4 [BROCHURE CODE 2101489]

THERMANN™

reece™