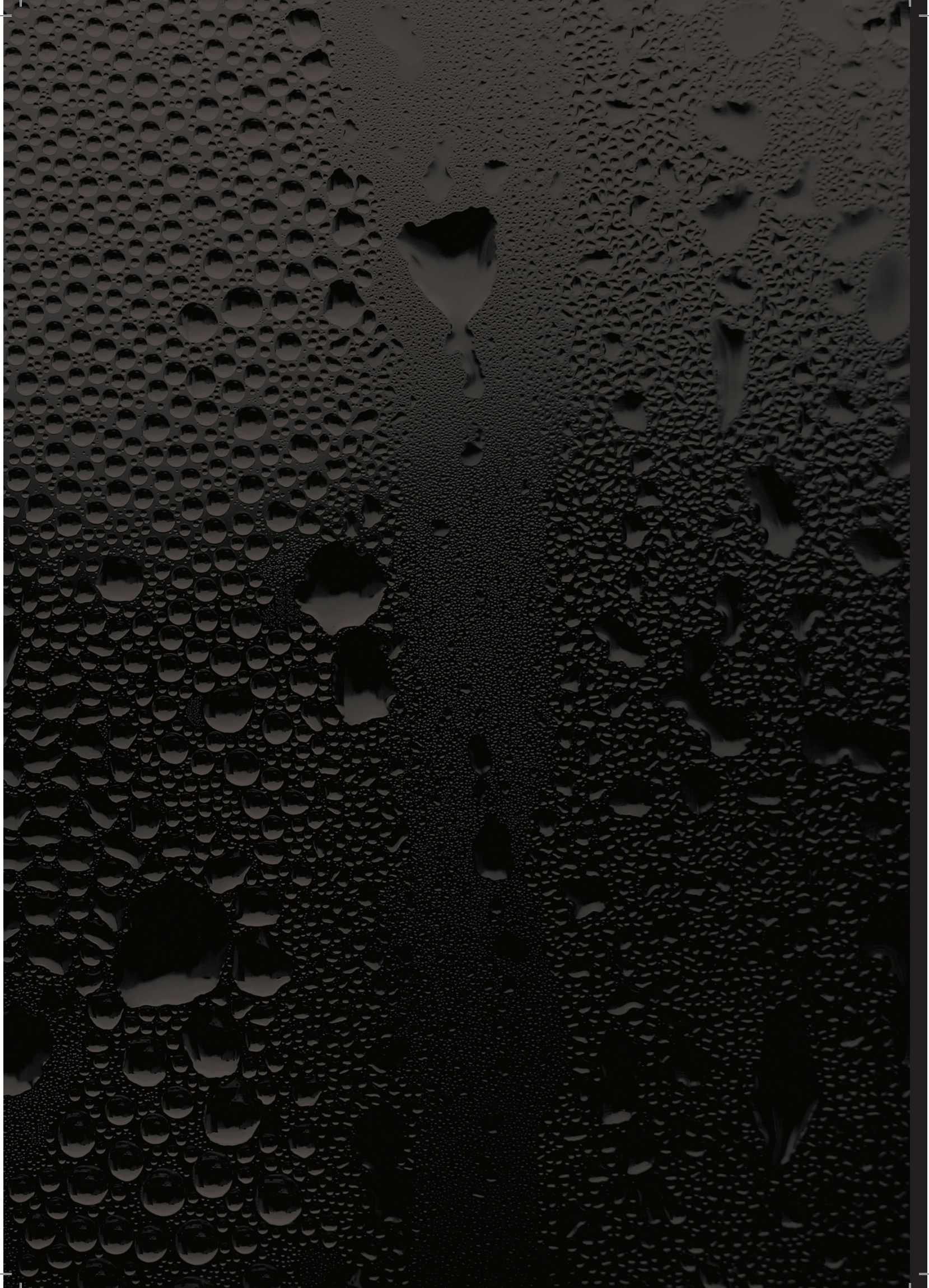




HOT WATER SYSTEMS

THERMANN™



HOT WATER YOU CAN DEPEND ON

Precision engineered for efficiency and long life, Thermann is setting new standards for hot water systems in New Zealand. Packed with innovative features and proven technology, Thermann delivers the ultimate hot water experience everyday. What's more, Thermann is committed to total customer care, so you'll enjoy market-leading warranties and full after sales support for many years to come.

CONTENTS

<u>ELECTRIC LARGE</u>	4
<u>CONTINUOUS FLOW 6 STAR</u>	6
<u>CONTINUOUS FLOW ACCESSORIES</u>	7

ELECTRIC LARGE HOT WATER CYLINDERS

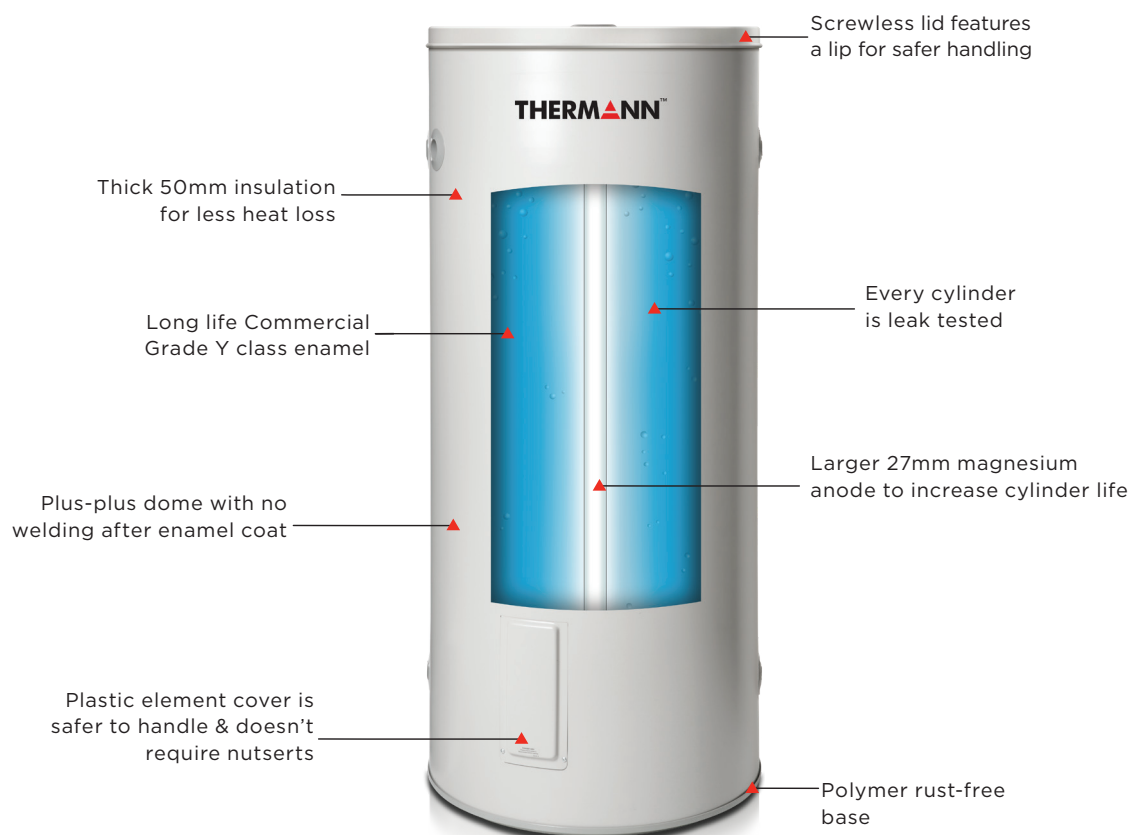


Thermann electric hot water cylinders are an insulated storage vessel efficiently storing hot water, ready for use, when you need it. The Thermann range of electric cylinders offer solutions in a variety of different sizes to suit your needs.

FEATURES

- Commercial grade enamel and a thicker anode
- Suitable for both low and mains pressure applications
- Coated steel finish
- Internal heat trap
- Side plumbing connections
- Low maintenance and long service life
- Can be installed indoors or out
- 10-year tank warranty, including 1-year full parts and labour*

RANGE FEATURES



SPECIFICATIONS

Electric Cylinder

Measurements	80L	135	160L	180
Total Height (A)	925	1298	1315	1697
Total Diameter (B)	490	490	530	490
Outlet Height (C)	735	1106	1095	1496
Inlet Height (D)	160	145	190	156
Electrical Entry (E)	85	125	125	125
Storage Capacity (L)	88	132	163	176
Net Weight Empty (kg)	41	50	59	65
Element Sizes (kW)	3.6	1.8, 3.0	3.6	2.4, 3.0
Relief Valve				
Pressure (kPa)	1000	1000	1000	1000
Max Inlet Pressure				
Without an ECV (kPa)	800	800	800	800
With an ECV (kPa)	650	650	650	650

Selecting the right unit for you

Model	80L	135	160L	180
No. People	2-3	2-4	3-5	4-6

Person can represent dishwasher or washing machine.

REECE MODEL	DESCRIPTION
9507804	Thermann Electric HWU SE 80 3.6kW
9507963	Thermann Electric HWU SE 135 1.8kW
9507964	Thermann Electric HWU SE 135 3.0kW
9507808	Thermann Electric HWU SE 160 3.6kW
9507965	Thermann Electric HWU SE 180 2.4kW
9507966	Thermann Electric HWU SE 180 3.0kW

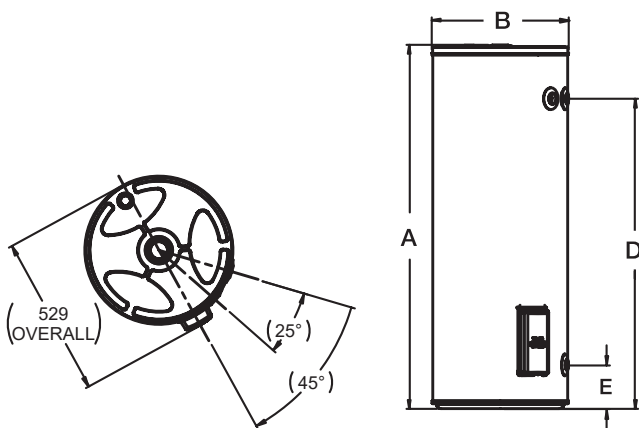


Cylinder

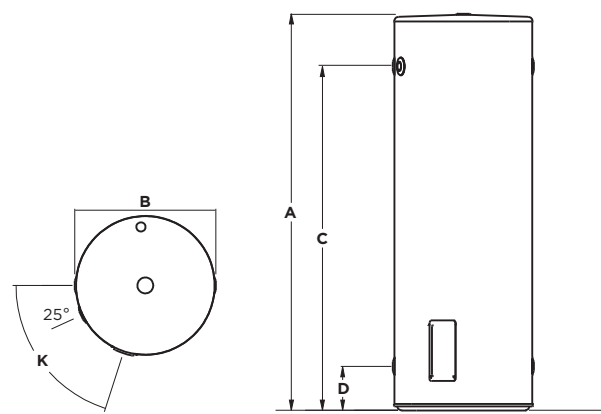


Parts and Labour

135 & 180 SPECIFICATIONS



80L & 160L SPECIFICATIONS



CONTINUOUS FLOW 6 STAR

HOT WATER SYSTEMS



Thermann's latest range of Continuous Flow units are an excellent option for New Zealand homes. Thermann gas continuous flow water heaters heat the water only as needed, not wasting energy by keeping water in a tank hot, earning it a 6 star energy rating.

FEATURES

- 6 star energy rating
- Providing New Zealand homes with superior technology straight from Noritz, a leading Japanese manufacturer of household water heaters
- Never runs out of hot water
- Made in Japan
- Electronic ignition means no standby pilot light
- 12-year warranty on heat exchanger, including 3-year full parts and labour*

SPECIFICATIONS

Model - preset 55°C	26L NG / LPG
Flow Rate (l/min @ 25° rise)	26
Max Set Temperature °C	75
Min Operating Flow Rate (l/min)	2.4
Gas Consumption MJ/h - NG	200
Gas Consumption MJ/h - LPG	200
Star Rating	6.0
Gas Type	NG or ULPG
Weight (kg)	22
Max water supply pressure (kPa)	1000
Min water supply pressure (kPa)	200
Cold Water Connection	20mm ¾"
Hot Water Connection (mm)	20mm ¾"
Gas Connection (mm)	20mm ¾"

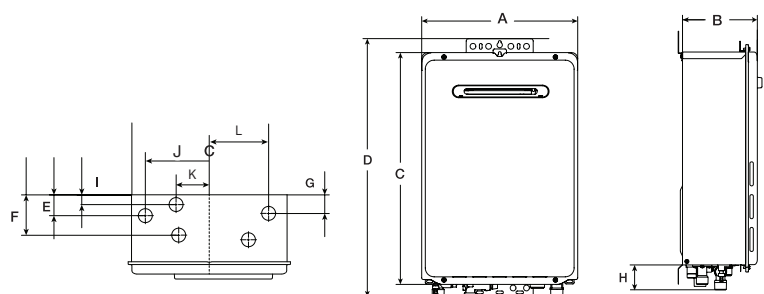
Reece Model	Description
9507956	Thermann 26L C/Flow N/G
9507957	Thermann 26L C/Flow LPG



CONTROLLERS

Separate controllers available that allow you to select the hot water temperature you prefer - a welcome safety feature for families.
9507958 - Main, 9507959 - Bathroom 1, 9507960 - Bathroom 2

Dimensions (MM)	26L NG / LPG
Width (A)	350
Depth (B)	170
Height - Unit (C)	600
Height - Including Brackets (D)	655
Hot Water Outlet (From Back) (E)	40
Cold Water Inlet (From Back) (F)	97
Gas Connection (From Back) (G)	40
Gas Connection Length (From Base)	49
Cold Connection Length (From Base) (H)	48
Hot Connection Length (From Base)	44
Hot Water Outlet (From Centre) (J)	131
Drain & Cold Water Outlet (From Centre) (K)	54
Gas Connection (From Centre) (L)	100



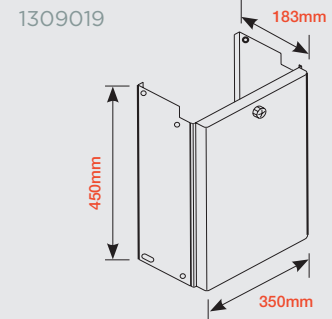
6 Heat Exchanger Parts and labour

CONTINUOUS FLOW ACCESSORIES

PIPE COVER



- Pipe covers conceal pipes and valves for a nice, tidy finish to the installation.
- Pipe covers are supplied in the same colour as the continuous flow water heater.



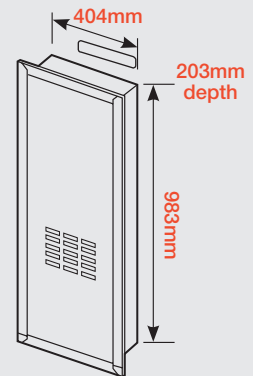
RECESS BOX



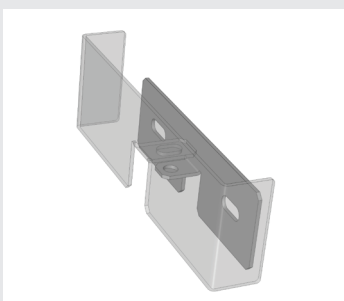
- Allows the water heater to be installed recessed into the wall, providing a flush finish when installed.

Recess Box
1309020 suits
Thermann 26L NG
& 26L LPG

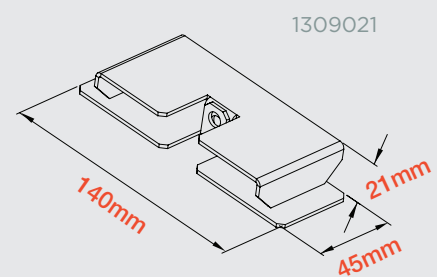
Note:
Dimensions above
show the cut-out
dimensions only.



ANTI THEFT BRACKET



- Secures your continuous flow water heater from theft.
- A bracket fits over the water heater mounting bracket, preventing the unit from being removed from the wall without irreparable damage.

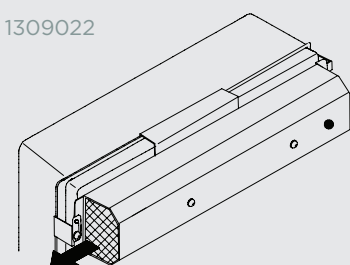


FLUE DIVERTER



- Manufactured from durable stainless steel.
- Designed to divert exhaust in a sideways direction away from windows, doors, fences, trees or other structures.
- Allows the water heater to operate efficiently ensuring the exhaust is not being obstructed.

1309022



www.reece.co.nz/bathrooms/brands/thermann

Reece. Works for you.™

Visit www.reece.co.nz for your nearest Reece store.

Due to limitations in the printing process the colours in this brochure are a guide only.

The manufacturer/distributor reserves the right to vary specifications or delete models from their range without prior notification. The manufacturer/distributor takes no responsibility for printing errors.

All products enjoy a product replacement warranty. *For full warranty details visit www.reece.co.nz/warranties

[BROCHURE CODE 2101489 Version 3]

THERMANN™

reece™