

The background features a dark grey surface covered in numerous water droplets of varying sizes. Two large, solid red geometric shapes, resembling triangles, are positioned on the left side of the image, one pointing downwards and one pointing upwards, partially overlapping the droplet pattern.

HOT WATER **SYSTEMS**

THERMANNTM

ELECTRIC STORAGE

HOT WATER SYSTEMS

If you're looking to replace an existing electric storage water heater, Thermann electric storage is an ideal solution - available in a variety of tank sizes for homes of all sizes and delivering full mains pressure.

- Low maintenance and long service life
- Full flow pressure to all outlets
- Can be installed indoors or out[^]
- Steel tank features rock-hard Duro-namel[®] vitreous enamel to maximise tank life and durability

135 & 180 MODELS

- Feature a larger anode and commercial grade enamel for an even longer life
- 10-year tank warranty, including 1-year full parts and labour*

25L & 50L MODELS

- Feature dual handed V-fit plumbing connections for easier access
- 7-year tank warranty, including 1-year full parts and labour*

NO. OF ADULTS & CHILDREN	MODEL
	25L
	50L
	135
	180

Adult icon can represent dishwasher or washing machine.

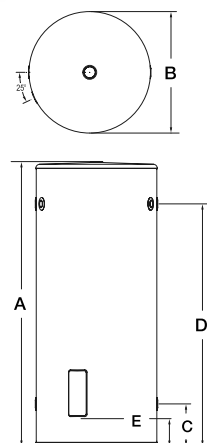
SPECIFICATIONS	25L PLUG IN [^]	25L	50L PLUG IN [^]	50L	135	180
Storage Capacity (L)	31	31	50	50	132	176
Net Weight Empty (kg)	17	17	23	23	50	65
Element Sizes (kW)	2.4	3.6	2.4	3.6	1.8, 3.0	2.4, 3.0
Relief Valve Pressure (kPa)	1000	1000	1000	1000	1000	1000
Max Inlet Pressure (kPa)	800	800	800	800	800	800

[^] Thermann Plug-in model (plugs into standard power point). Plug in models may only be installed indoors.

REECE MODEL	DESCRIPTION
9507167	THERMANN SMALL ELEC HWU PLUG SE 25L 2.4kW
9507166	THERMANN SMALL ELEC HWU SE 25L 3.6kW
9507169	THERMANN SMALL ELEC HWU PLUG SE 50L 2.4kW
9507168	THERMANN SMALL ELEC HWU SE 50L 3.6kW
9507963	THERMANN ELECTRIC HWU SE 135 1.8kW
9507964	THERMANN ELECTRIC HWU SE 135 3.0kW
9507965	THERMANN ELECTRIC HWU SE 180 2.4kW
9507966	THERMANN ELECTRIC HWU SE 180 3.0kW

TANK DIMENSIONS	25L	50L	135	180
A Overall Height (mm)	455	670	1298	1697
B Overall Diameter (mm)	405	405	492	492
C Cold Water Inlet (mm)	145	145	156	156
D Hot Water Outlet (mm)	275	490	1106	1496
E Electrical Entry (mm)	70	70	125	125

All Thermann electric water heaters operate at 240V AC single phase electricity supply. 135 & 180 models only feature plumbing connections on the right hand side of the tank.



GAS CONTINUOUS FLOW

HOT WATER SYSTEMS

Compact and efficient, Thermann's latest range of Continuous Flow units are an excellent option for New Zealand homes. Thermann gas continuous flow water heaters heat the water only as needed, not wasting energy by keeping water in a tank hot, earning it a 6 star energy rating.

- 6 star energy rating
- Providing New Zealand homes with superior technology straight from Noritz, Japan's leading manufacturer of household water heaters
- Never run out of hot water
- Made in Japan
- Electronic ignition means no standby pilot light
- 12-year warranty on heat exchanger, including 3-year full parts and labour*



REECE MODEL	DESCRIPTION
9507956	THERMANN 26L C/FLOW N/G
9507957	THERMANN 26L C/FLOW LPG

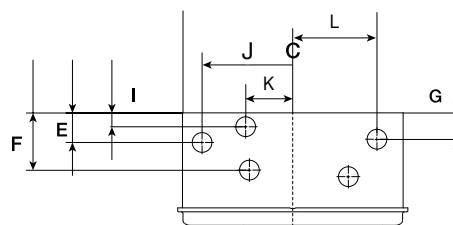
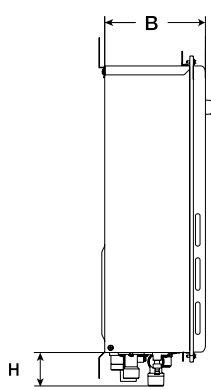
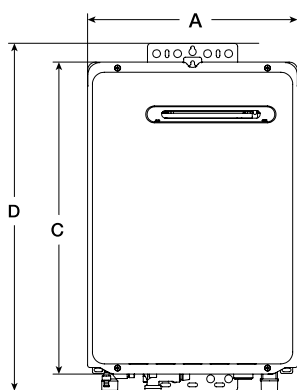
MODEL - preset 55°C	26L NG / LPG
Flow Rate (l/min @ 25° rise)	26
Max Set Temperature °C	75
Min Operating Flow Rate (l/min)	2.4
Gas Consumption MJ/h - NG	200
Gas Consumption MJ/h - LPG	200
Star Rating	6.0
Gas Type	NG or LPG
Weight (kg)	22
Max water supply pressure (kPa)	1000
Min water supply pressure (kPa)	200
Cold Water Connection	20mm ¾"
Hot Water Connection (mm)	20mm ¾"
Gas Connection (mm)	20mm ¾"

CONTROLLERS

Separate controllers available that allow you to select the hot water temperature you prefer - a welcome safety feature for families.

9507958 - Main, 9507959 - Bathroom 1, 9507960 - Bathroom 2

DIMENSIONS (MM)	26L NG / LPG
Model	26L/min
A Width	350
B Depth	170
C Height - Unit	600
D Height - Including Brackets	655
E Hot Water Outlet (From Back)	40
F Cold Water Inlet (From Back)	97
G Gas Connection (From Back)	40
Gas Connection Length (From Base)	49
H Cold Connection Length (From Base)	48
Hot Connection Length (From Base)	44
I Drain Outlet (From Back)	N/A
J Hot Water Outlet (From Centre)	131
K Drain & Cold Water Outlet (From Centre)	54
L Gas Connection (From Centre)	100



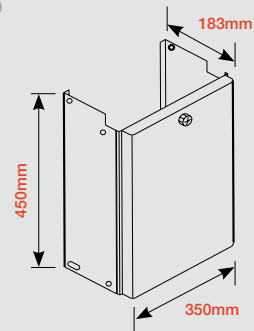
CONTINUOUS FLOW ACCESSORIES

PIPE COVER



- Pipe covers conceal pipes and valves for a nice, tidy finish on the water heater.
- Pipe covers are supplied in the same colour as the continuous flow water heater

1309019



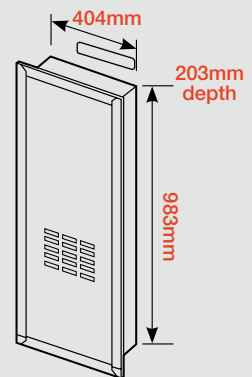
RECESS BOX



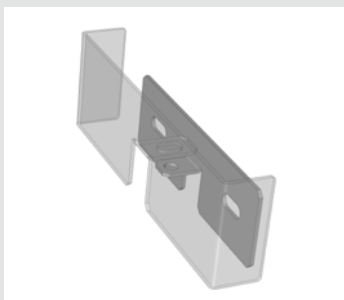
- Allows water heater to be installed recessed into the wall, providing a flush finish when installed

Recess Box
1309020 suits
Thermann 26L NG
& 26L LPG

Note:
Dimensions above
show the cut-out
dimensions only.

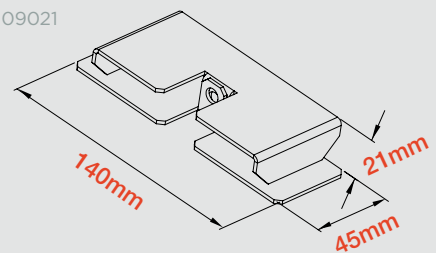


ANTI THEFT BRACKET



- Secures your continuous flow water heater from theft
- A bracket fits over the water heater mounting bracket, preventing the unit from being removed from the wall without irreparable damage.

1309021



FLUE DIVERTER



- Manufactured from durable stainless steel
- Designed to divert exhaust in a sideways direction away from windows, doors, fences, trees or other structures
- Allows the water heater to operate efficiently ensuring the exhaust is not being obstructed.

1309022

